



Approaches to Maine, New Hampshire, and Massachusetts Port Access Route Study (MNMPARS)

Public Meeting Information

Version 2: Updated July 18, 2022

The First Coast Guard District will host six public meetings to provide an opportunity for oral comments regarding the Approaches to Maine, New Hampshire, and Massachusetts Port Access Route Study. Some meetings are offered as a hybrid (in-person and virtual) format, while others are exclusively in-person or virtual.

To view the notice of study and all related documents or to submit your comments online please go to the federal portal at <https://www.regulations.gov/document/USCG-2022-0047-0017>

*Although registration is not required, it is highly encouraged to manage the quality of each meeting. When registering, please include the following information:

1. Your first and last name
2. The organization you represent (if any)
3. If you will be attending the virtual or in-person session (if applicable)
4. Whether you intend to make a public comment

Please send your registration, any questions, and requests for any accommodations by sending an email to LTJG Thomas Davis at Thomas.S.Davis@uscg.mil

Zoom (Virtual) Session: Join by clicking on the Zoom Meeting Link listed below or dial-in by phone to the teleconference by calling either (646) 828-7666 or (551) 285-1373 and entering the “Meeting ID”.

If this is your first time using Zoom on your device, you will be prompted to *download and run Zoom*.

Schedule

Portsmouth, New Hampshire

Date: Tuesday, August 2, 2022

Time: 3:00 p.m.

Location (Hybrid): NH Department of Environmental Services
222 International Drive, Suite 175
Portsmouth, NH 03801

Additional Details: There will be a sign in the lobby directing participants to Room A. While there is ample free parking, there are limited spaces in front of the NHDES office. It is recommended that attendees park in spaces on the north side of the building. Additional directions and a map of the facility/parking areas are shown on **pages 4-6** of this document.

Virtual Session:

Meeting Link: <https://www.zoomgov.com/j/1614544611>

Meeting ID: 161 454 4611



Approaches to Maine, New Hampshire, and Massachusetts Port Access Route Study (MNMPARS)



Public Meeting Information

Salem, Massachusetts

Date: Wednesday, August 3, 2022

Time: 3:00 p.m.

Location: Winter Island Function Hall
50 Winter Island Road
Salem, MA 01970

Additional Details: A map showing location of the meeting hall and parking locations can be found on **page 7** of this document.

Virtual Session:

Meeting Link: <https://www.zoomgov.com/j/1612074196>

Meeting ID: 161 207 4196

Jonesport, Maine

Date: Wednesday, August 10, 2022

Time: 3:00 p.m.

Location: USCG Station Jonesport
9 Bridge Street
Jonesport, ME 04649

Additional Details: The station has plenty of on-site and street parking available.

Belfast, Maine

Date: Thursday, August 11, 2022

Time: 3:00 p.m.

Location (Hybrid): University of Maine Hutchinson Center
Conference Room 138
80 Belmont Avenue
Belfast, ME 04915

Additional Details: Ample parking is available on-site. A map of the venue, entrances, and location of the meeting room can be found on **page 8**.

Virtual Session:

Meeting Link: <https://www.zoomgov.com/j/1609290404>

Meeting ID: 160 929 0404



Approaches to Maine, New Hampshire, and Massachusetts Port Access Route Study (MNMPARS)



Public Meeting Information

Portland, Maine

Date: Wednesday, August 17, 2022

Time: 3:00 p.m.

Location: International Marine Terminal
454 Commercial Street
Portland, ME 04101

Additional Details: The meeting room can be easily accessed through the entrance facing Commercial Street. There is a large city parking lot located across the street from the terminal and some other limited on-site parking. A photo of the entrance and parking locations can be found on **page 9**.

Virtual Session:

Meeting Link: <https://www.zoomgov.com/j/1611621140>

Meeting ID: 161 162 1140

Virtual Meeting

Date: Thursday, August 18, 2022

Time: 6:00 p.m.

Location: ZOOM and Teleconference

Meeting Link: <https://www.zoomgov.com/j/1618777095>

Meeting ID: 161 877 7095

To NH Department of Environmental Services Coastal Offices at Pease International Tradeport

FROM THE SOUTH:

Via I-95

Take exit 4 for “**Spaulding Turnpike, 4 and Rte. 16 , NH Lakes, White Moutains**” which exits to the LEFT. This will take you directly onto north Rte. 16/Spaulding Turnpike towards Newington and Dover. Follow the Spaulding Turnpike /Route 16 northbound and take Exit 1, **Pease Int'l Tradeport**. Turn left at the bottom of the Exit 1 ramp. Cross under the Spaulding Turnpike, Stay to the two right lanes. You are now on the northern entrance road (Pease Boulevard) to Pease International Tradeport. Then follow directions at bottom of this page.

Via Spaulding Turnpike/State Route 16 OR from the Portsmouth Traffic Circle

Follow the Spaulding Turnpike /Route 16 northbound and exit at Exit 1, **Pease Int'l Tradeport**. Turn left at the bottom of the Exit 1 ramp. Cross under the Spaulding Turnpike, you are now at the Pease Int. Tradeport

FROM THE NORTH:

Via I-95

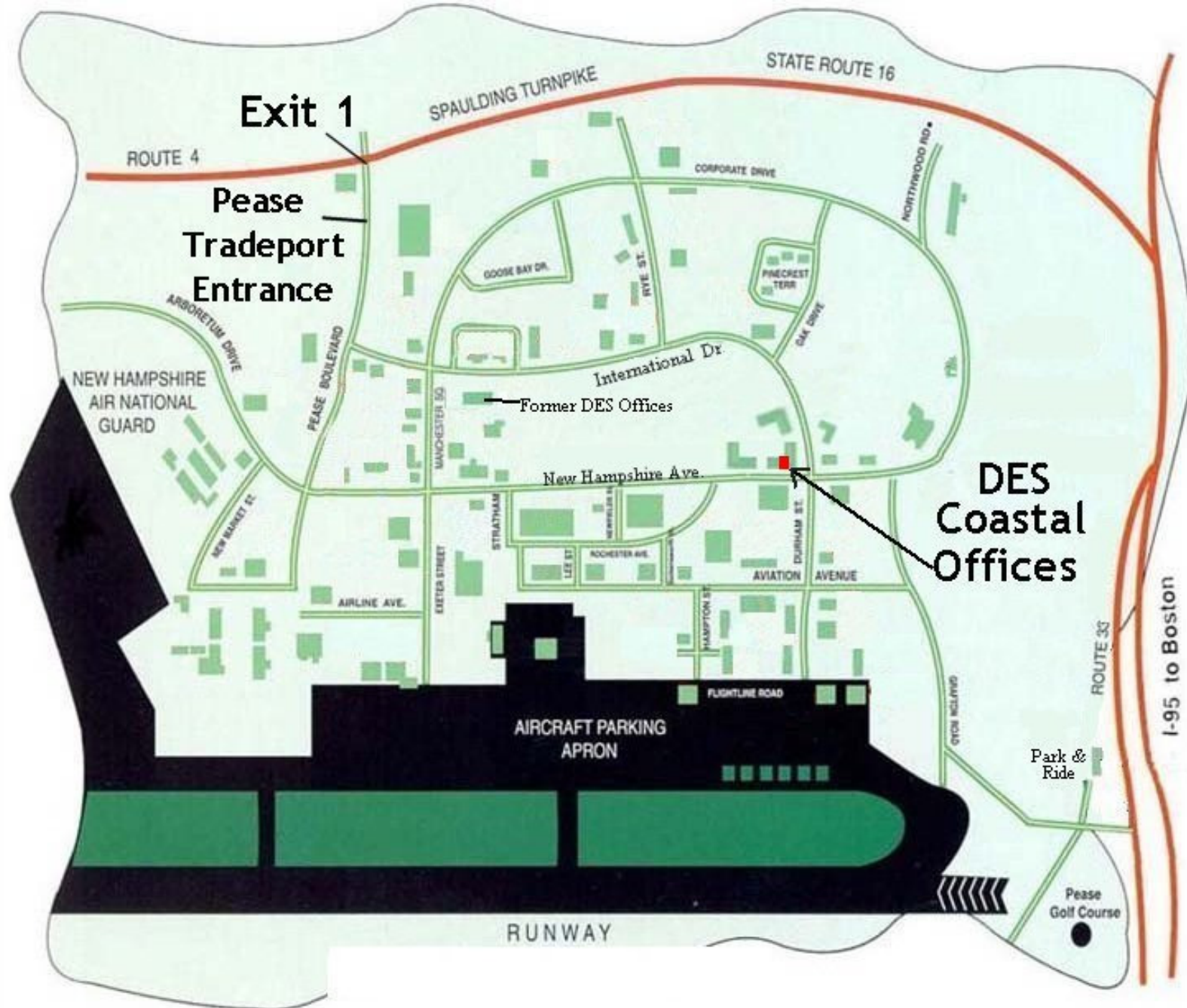
Follow Interstate 95 southbound and exit at Exit 5. This will bring you directly onto the Spaulding Turnpike/Rte 16. Follow the Spaulding Turnpike /Route 16 northbound and Take exit 1. **Pease Int'l Tradeport** Turn left at the bottom of the Exit 1 ramp. Cross under the Spaulding Turnpike. Stay to the right two lanes. You are now on the northern entrance road (Pease Boulevard) to Pease International Tradeport.

Via the Spaulding Turnpike (State Route 16)

Follow the Spaulding Turnpike/Route 16 southbound and exit at Exit 1, *Pease Int'l Tradeport* . Turn right at the bottom of the Exit 1 ramp. You are now on the northern entrance road (Pease Boulevard) to Pease International Tradeport.

ONCE INSIDE THE PEASE TRADEPORT.

Go to the first set of traffic lights and take a left . Go a short distance past the Bank of NH to a large 4 way intersection. Go straight through this intersection for another 1 mile to a 4 way intersection. Take a right onto New Hampshire Drive. Take the next right into the office complex. Take an immediate right into the parking lot. Find the DES office at **Unit 175** approximately ½ way along the building. **Note the “NH Dept. of Environmental Services” sign at this corner.**



Exit 1

Pease Tradeport Entrance

NEW HAMPSHIRE AIR NATIONAL GUARD

Former DES Offices

DES Coastal Offices

AIRCRAFT PARKING APRON

RUNWAY

Park & Ride

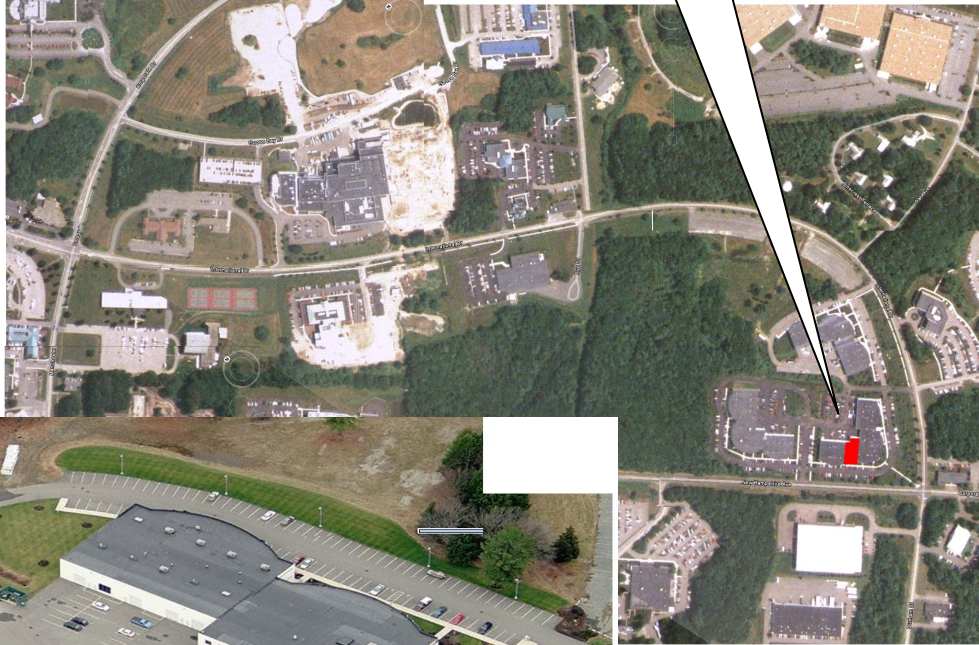
Pease Golf Course

I-95 to Boston

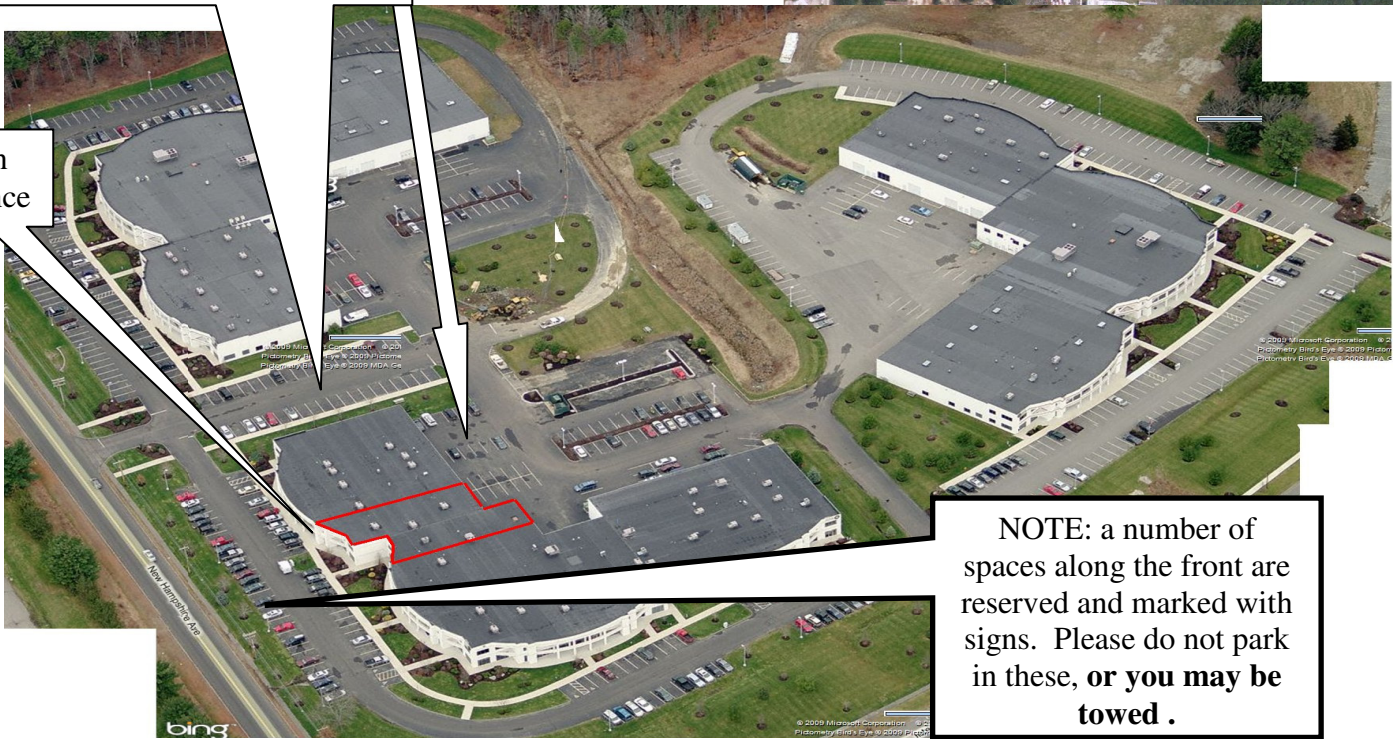


DES Offices
222 International
Drive
SUITE 175

Parking is available around the building with the exception of several spaces near the main entrance



Main
Entrance

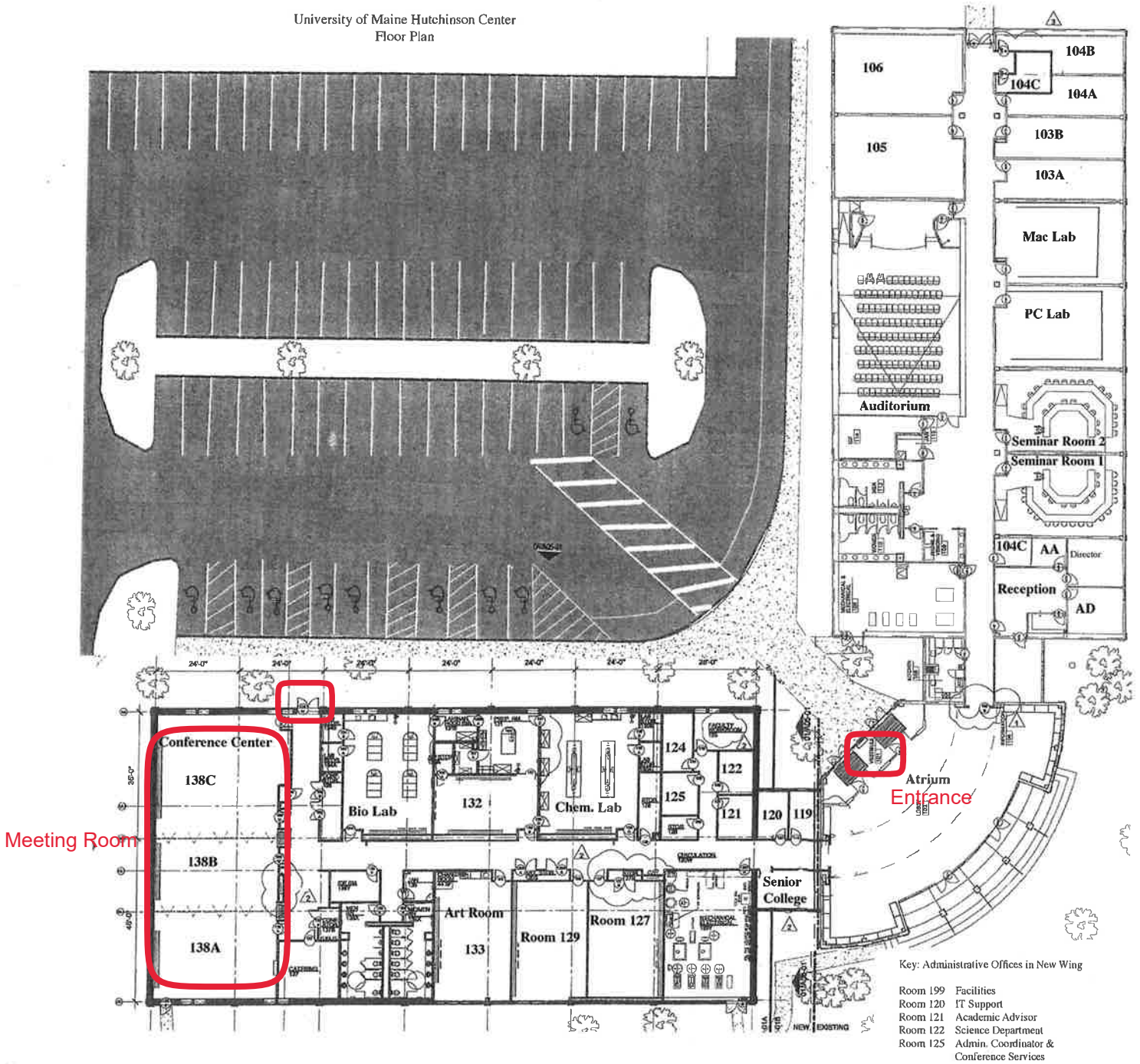


NOTE: a number of spaces along the front are reserved and marked with signs. Please do not park in these, or you may be towed .

Winter Island Function Hall
Salem, MA



University of Maine Hutchinson Center
Floor Plan



International Marine Terminal
Portland, ME

